



spectrum A

*Proven radio technology
with integrated LCD.*

Top features:

**2.4 GHz
Option**

Feedback

Frequency management

Vibration alarm

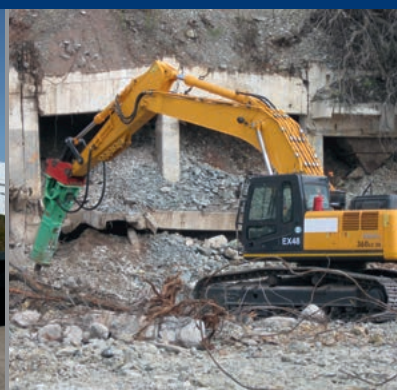
radiomatic report[®]

Micro / orthogonal drive

... and much more



Quality in Control.



spectrum A



Highlights:



Feedback via LCD (optional)

The spectrum A offers the indication of numerous crane / machine data, warnings and error notifications – a considerable increase in safety.



Frequency management (optional)

A fully automated frequency management via DECT or 2.4 GHz technology ensures interruption-free radio operation without frequency conflicts.



Vibration alarm (optional)

This function is triggered by low battery level. As an option, it can be used for feedback information such as warnings of impending overloads.



Micro / orthogonal drive (optional)

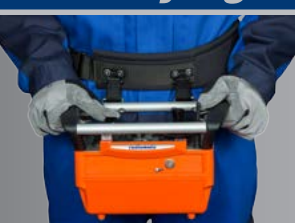
These functions protect the operator in difficult driving maneuvers from dangers resulting from driving too fast or unintended direction changes of the crane / machine.



radiomatic report® (optional)

This feature protects the control from unauthorized use. It enables the blocking of safety-relevant functions for non-authorized personnel as well as the storage of useful operational data.

Carrying methods:



Hip belt.



Shoulder / neck strap.

Applications:

Cranes, machinery and numerous other applications.



Version for construction cranes.



Version for hydraulic applications.

Further details:

- Up to 2 joysticks or up to 6 linear levers / numerous push buttons, toggle switches or rotary switches (maintained / spring-return) / STOP impact switch.
- LED for indication of operation / battery status.
- radiomatic® iLOG for the quick activation of a spare transmitter.
- 2 rechargeable NiMH exchange batteries, approx. 9 h of continuous operating time.
- Robust plastic housing, protection class IP 65.
- Weight: approx. 2 kg (4.4 lbs.) including battery.
- radiomatic® AFS = Automatic Frequency Selection for construction crane and mobile hydraulic applications (optional for other systems).
- Manual frequency switch (for systems without radiomatic® AFS).
- Further options: z-axis switches, front panel lighting, tandem operation, catch-release, radiomatic® infrakey, enabling switch, cable control.